

[www.lab-service.fr](http://www.lab-service.fr)

# Particle analysis & processing

Micronisation and powder  
characterization expertise

MICRONISATION  
GRANULOMETRY  
GRINDING  
SIEVING





An independent  
family owned  
company  
with advanced  
expertise

+50  
collaborators

+40  
years of experience

For more than 40 years, Lab Service has devoted all its expertise to the shaping and characterization of fine powders for the major industries.



PHARMACEUTICAL



AGRI-FOOD



COSMETIC



CHEMICAL



# 4 key businesses to meet your needs

9

independent  
production rooms



## AIR JET MICRONISATION

- Due to a large **machine park** and functional workshops, Lab-Service offers a wide range of micronisation (from 2  $\mu\text{m}$  to 40  $\mu\text{m}$  median).
- This process **guarantees treatment without heating material**.



## CUSTOMISED GRANULOMETRIC ANALYSES

**Dedicated laboratory with high-precision equipment** in order to offer you various services:

- **Granulometric analysis**, apparent density
- **Development** of analytical methods
- **Transfer** of analytical methods
- **Validation** of analytical methods

**Technologies:** laser diffraction, Coulter counter, microscopy and morphology.



## GRINDING /LUMPING

Our production rooms are equipped with **3 types of grinders (for 30  $\mu\text{m}$  and more) and 1 lump breaker** in order to respond to each problem:

- Pin grinder
- Hammer mill
- Sieve grinder
- Lump breaker to deagglomerate powders.



## SIEVING

Our equipment allows us to sieve a powder using **sieves with mesh diameters** between 100  $\mu\text{m}$  and 1,000  $\mu\text{m}$ .



# Flawless quality, security guarantee for your products

Lab-Service guarantees its customers a high quality management system for their products and services, with the aim of satisfying them as best as possible. Considered as a chemical industry, standards followed are **ICH Q7, GMP and ISO.**

## AUDITS & INSPECTIONS

Our company is **regularly inspected by authorities** (FDA, ANSM) and audited by our customers.

For each inspection or audit, an **action plan** is systematically drafted and sent.

**Various actions** are monitored during quality meetings, regularly held between the various department managers.

2 to 4 audits  
by customers  
every month

ansm

FSSC 22000

pmda

ECO  
CERT

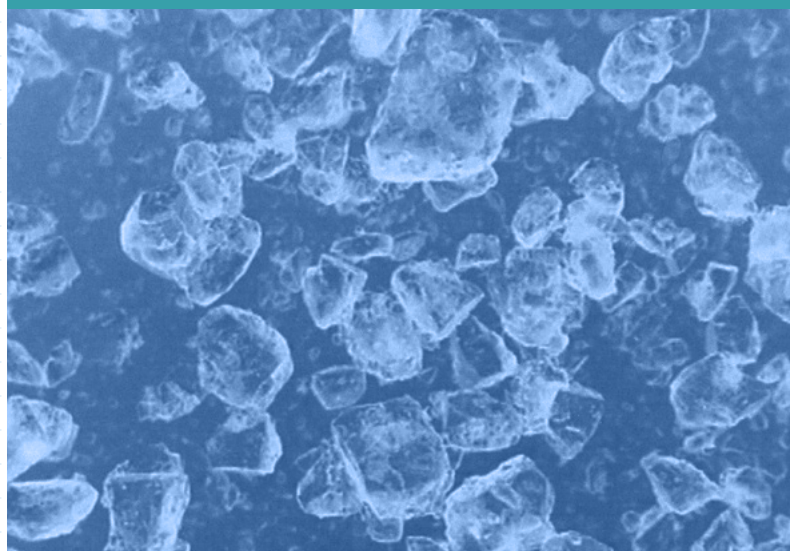
FDA



## STAFF TRAINING

All of our employees are **qualified and regularly trained** in order to maintain a high level of quality.

**Quality Unit** manages authorizations and records each training in the employee file.



## QUALIFIED SUPPLIERS

Our critical suppliers are **strictly selected, qualified and monitored** by Quality Unit.

**Regular audits** are carried out to check their standard with GMP.



# Customer satisfaction as a guideline for our values

.....

## REACTIVITY & DISPONIBILITY

We have **responsive and available teams**. From your first contact, you work with a competent team that supports you throughout your projects.

**Our experience** in the field of micronisation allows us to establish specifications that match exactly with your needs.

Due to the efficiency of our **Quality Unit**, the responsiveness of our **customer service** and the experience of **our operators**, we achieve your objectives jointly, whatever the industry field.

.....

## SKILLS & QUALIFICATIONS

All our equipment is **GMP qualified**. After each campaign, a complete dismantling and cleaning of the room's equipment is systematically carried out.

We have **9 production rooms** to accommodate different categories of products. We also have **equipment of different sizes and specific shapes** to adapt to the nature and volume of each product.

Your products are processed by **trained and qualified operators**.

.....

## CONFIDENTIALITY & DISCRETION

**Working directly with the pharmaceutical and food industry**, professional secrecy is a necessity.

Our **discreet and experienced teams**, handle our customers informations in the greatest respect of the professional secrecy.

8 000

analyses each year

1 200

tons of products each year

3 500

customers samples each year

# Contact us

455 ZA du Verdier  
71960 La Roche Vineuse  
FRANCE

☎ **+33 (0) 3 85 37 73 74**

📠 **+33 (0) 3 85 37 75 70**

✉ **contact@lab-service.fr**

.....



[www.lab-service.fr](http://www.lab-service.fr)

## By train

TGV - Mâcon Loché  
(9 km from the station)  
10 min from Mâcon  
1h35 from Paris by train

## GMS coordinates

Latitude 46.3377  
Longitude 4.72204  
DMS Latitude N 46 20 15 72  
Longitude E4 43 19.343

.....

